



Material	Polyamid 6
Dichteinsatz	Chloropren (CR) / Silikon (SIL)
Flachdichtung	Chloropren (CR) / Silikon (SIL)
Einsatztemperatur	CR: -40°C bis +70°C SIL: -60°C bis +70°C
Schutzart	IP66 / IP68
ATEX-Kennzeichnung	Ex II 2 GD Ex e IIC Gb / Ex tb IIIC Db
Hinweis	Ex e-Kabelverschraubung aus Kunststoff mit erhöhter Schlagfestigkeit von 7 Joule.

Material	Polyamid 6
Sealing	Chloroprene (CR) / Silicone (SIL)
Flat sealing	Chloroprene (CR) / Silicone (SIL)
Operating Temperature	CR: -40°C bis +70°C SIL: -60°C bis +70°C
Protection Class	IP66 / IP68
ATEX Marking	Ex II 2 GD Ex e IIC Gb / Ex tb IIIC Db
Note	Ex e cable gland made of plastic with improved impact resistance of 7 Joule.

Für besondere Bedingungen oder Einschränkungen siehe entsprechende Produktdokumentation.

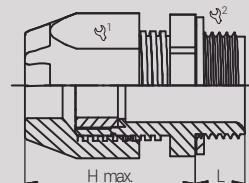
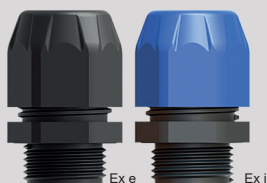
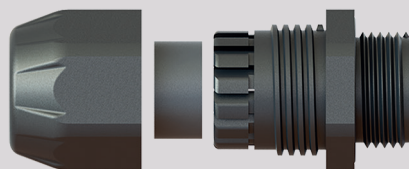
For specific conditions or limitations please see relevant product documentation.

Zulassungen / Approvals



IMQ13ATEX010X IECExIMQ13.0003X TC RU C-TR.AA87.B.00941 DNV 18.0150X

Artikel-Nummer RST Article Code RST	Hersteller-Nummer Manufacturer Code	Artikel-Nummer RST Article Code RST	Hersteller-Nummer Manufacturer Code	Hersteller Manufacturer	Gewinde Entry Thread	Klemmbereich Clamping Range (mm)		1/2	L (mm)	H max. (mm)	VPE PU
						≥	≤				
CR		SIL									
Ex e											
85080512X4HI	EHIBM-0XSC	85080512X4HISI	EHIBM-0XSS	bimed	M12x1.5	4.0	6.5	15/15	10.0	28.3	100
85080516X4HI	EHIBM-SX1C	85080516X4HISI	EHIBM-SX1S		M16x1.5	5.0	8.0	19/19	10.0	31.6	50
85080517X4HI	EHIBM-X1C	85080517X4HISI	EHIBM-X1S		M16x1.5	6.0	10.0	22/22	10.0	35.2	50
85080517M20X4HI	EHIBM-SX2C	85080517M20X4HISI	EHIBM-SX2S		M20x1.5	6.0	10.0	22/24	10.0	35.2	50
85080520X4HI	EHIBM-X2C	85080520X4HISI	EHIBM-X2S		M20x1.5	7.0	12.0	24/24	10.0	35.8	50
85084520X4HI	EHIBM-MX2C	85084520X4HISI	EHIBM-MX2S		M20x1.5	7.0	13.0	25/25	10.0	36.4	50
85080522X4HI	EHIBM-X3C	85080522X4HISI	EHIBM-X3S		M20x1.5	11.0	14.0	27/27	10.0	35.0	50
85080522M25X4HI	EHIBM-SX5C	85080522M25X4HISI	EHIBM-SX5S		M25x1.5	11.0	14.0	27/27	10.0	35.8	25
85084525X4HI	EHIBM-XEU25C	85084525X4HISI	EHIBM-XEU25S		M25x1.5	12.0	17.0	29/29	10.0	40.2	25
85080525X4HI	EHIBM-X5C	85080525X4HISI	EHIBM-X5S		M25x1.5	14.0	18.0	33/33	10.0	41.6	25
85080525M32X4HI	EHIBM-SX7C	85080525M32X4HISI	EHIBM-SX7S		M32x1.5	14.0	18.0	33/36	10.0	41.6	20
85084532X4HI	EHIBM-XEU32C	85084532X4HISI	EHIBM-XEU32S		M32x1.5	16.0	21.0	36/36	10.0	45.3	20
85080532X4HI	EHIBM-X7C	85080532X4HISI	EHIBM-X7S		M32x1.5	19.0	25.0	42/42	15.0	46.7	20
85084540X4HI	EHIBM-XEU40C	85084540X4HISI	EHIBM-XEU40S		M40x1.5	20.0	28.0	46/46	10.0	50.4	10
85080540X4HI	EHIBM-X8C	85080540X4HISI	EHIBM-X8S		M40x1.5	23.0	32.0	53/53	18.0	55.9	10
85080550X4HI	EHIBM-X9C	85080550X4HISI	EHIBM-X9S	M50x1.5	31.0	38.0	60/60	18.0	58.1	10	
85080563X4HI	EHIBM-X10C	85080563X4HISI	EHIBM-X10S	M63x1.5	35.0	44.0	65/65	18.0	58.4	10	
Ex i											
84080512X4HI	EHIBMI-0XSC	84080512X4HISI	EHIBMI-0XSS	bimed	M12x1.5	4.0	6.5	15/15	10.0	28.3	100
84080516X4HI	EHIBMI-SX1C	84080516X4HISI	EHIBMI-SX1S		M16x1.5	5.0	8.0	19/19	10.0	31.6	50
84080517X4HI	EHIBMI-X1C	84080517X4HISI	EHIBMI-X1S		M16x1.5	6.0	10.0	22/22	10.0	35.2	50
84080517M20X4HI	EHIBMI-SX2C	84080517M20X4HISI	EHIBMI-SX2S		M20x1.5	6.0	10.0	22/24	10.0	35.2	50
84080520X4HI	EHIBMI-X2C	84080520X4HISI	EHIBMI-X2S		M20x1.5	7.0	12.0	24/24	10.0	35.8	50
84084520X4HI	EHIBMI-MX2C	84084520X4HISI	EHIBMI-MX2S		M20x1.5	7.0	13.0	25/25	10.0	36.4	50
84080522X4HI	EHIBMI-X3C	84080522X4HISI	EHIBMI-X3S		M20x1.5	11.0	14.0	27/27	10.0	35.0	50
84080522M25X4HI	EHIBMI-SX5C	84080522M25X4HISI	EHIBMI-SX5S		M25x1.5	11.0	14.0	27/27	10.0	35.8	25
84084525X4HI	EHIBMI-XEU25C	84084525X4HISI	EHIBMI-XEU25S		M25x1.5	12.0	17.0	29/29	10.0	40.2	25
84080525X4HI	EHIBMI-X5C	84080525X4HISI	EHIBMI-X5S		M25x1.5	14.0	18.0	33/33	10.0	41.6	25
84080525M32X4HI	EHIBMI-SX7C	84080525M32X4HISI	EHIBMI-SX7S		M32x1.5	14.0	18.0	33/36	10.0	41.6	20
84084532X4HI	EHIBMI-XEU32C	84084532X4HISI	EHIBMI-XEU32S		M32x1.5	16.0	21.0	36/36	10.0	45.3	20
84080532X4HI	EHIBMI-X7C	84080532X4HISI	EHIBMI-X7S		M32x1.5	19.0	25.0	42/42	15.0	46.7	20
84084540X4HI	EHIBMI-XEU40C	84084540X4HISI	EHIBMI-XEU40S		M40x1.5	20.0	28.0	46/46	10.0	50.4	10
84080540X4HI	EHIBMI-X8C	84080540X4HISI	EHIBMI-X8S		M40x1.5	23.0	32.0	53/53	18.0	55.9	10
84080550X4HI	EHIBMI-X9C	84080550X4HISI	EHIBMI-X9S	M50x1.5	31.0	38.0	60/60	18.0	58.1	10	
84080563X4HI	EHIBMI-X10C	84080563X4HISI	EHIBMI-X10AS	M63x1.5	35.0	44.0	65/65	18.0	58.4	10	





Material	Polyamid 6
Dichteinsatz	Chloropren (CR) / Silikon (SIL)
Flachdichtung	Chloropren (CR) / Silikon (SIL)
Einsatztemperatur	CR: -40°C bis +70°C SIL: -60°C bis +70°C
Schutzart	IP66 / IP68
ATEX-Kennzeichnung	Ex II 2 GD Ex e IIC Gb / Ex tb IIIC Db
Hinweis	Ex e-Kabelverschraubung aus Kunststoff mit erhöhter Schlagfestigkeit von 7 Joule und Doppeldichtung.

Material	Polyamid 6
Sealing	Chloroprene (CR) / Silicone (SIL)
Flat sealing	Chloroprene (CR) / Silicone (SIL)
Operating Temperature	CR: -40°C bis +70°C SIL: -60°C bis +70°C
Protection Class	IP66 / IP68
ATEX Marking	Ex II 2 GD Ex e IIC Gb / Ex tb IIIC Db
Note	Ex e cable gland made of plastic with improved impact resistance of 7 Joule and double sealing insert.

Für besondere Bedingungen oder Einschränkungen siehe entsprechende Produktdokumentation.

For specific conditions or limitations please see relevant product documentation.

Zulassungen / Approvals



Artikel-Nummer RST Article Code RST	Hersteller-Nummer Manufacturer Code	Artikel-Nummer RST Article Code RST	Hersteller-Nummer Manufacturer Code	Hersteller Manufacturer	Gewinde Entry Thread	Klemmbereich Clamping Range		Klemmbereich innerer Dichteinsatz Clamping Range Inner Sealing		L	H max.	VPE PU		
						≥	≤	≥	≤					
						CR		SIL						
Ex e														
85280512X4HI	EHIBM-0XSCDS	85280512X4HISI	EHIBM-0XSSDS	bimed	M12x1.5	4.0	6.5	3.0	4.0	15/15	10.0	28.3	100	
85280516X4HI	EHIBM-SX1CDS	85280516X4HISI	EHIBM-SX1SDS		M16x1.5	5.0	8.0	4.0	5.0	19/19	10.0	31.6	50	
85280517X4HI	EHIBM-X1CDS	85280517X4HISI	EHIBM-X1SDS		M16x1.5	6.0	10.0	4.0	6.0	22/22	10.0	35.2	50	
85280517M20X4HI	EHIBM-SX2CDS	85280517M20X4HISI	EHIBM-SX2SDS		M20x1.5	6.0	10.0	4.0	6.0	22/24	10.0	35.2	50	
85280520X4HI	EHIBM-X2CDS	85280520X4HISI	EHIBM-X2SDS		M20x1.5	7.5	12.0	6.0	7.5	24/24	10.0	35.8	50	
85284520X4HI	EHIBM-MX2CDS	85284520X4HISI	EHIBM-MX2SDS		M20x1.5	7.0	13.0	4.0	7.0	25/25	10.0	36.4	50	
85280522X4HI	EHIBM-X3CDS	85280522X4HISI	EHIBM-X3SDS		M20x1.5	11.0	14.0	8.0	11.0	27/27	10.0	35.0	50	
85280522M25X4HI	EHIBM-SX5CDS	85280522M25X4HISI	EHIBM-SX5SDS		M25x1.5	11.0	14.0	8.0	11.0	27/27	10.0	35.8	25	
85284525X4HI	EHIBM-XEU25CDS	85284525X4HISI	EHIBM-XEU25SDS		M25x1.5	13.0	17.0	9.0	13.0	29/29	10.0	40.2	25	
85280525X4HI	EHIBM-X5CDS	85280525X4HISI	EHIBM-X5SDS		M25x1.5	13.0	18.0	10.0	13.0	33/33	10.0	41.6	25	
85280525M32X4HI	EHIBM-SX7CDS	85280525M32X4HISI	EHIBM-SX7SDS		M32x1.5	13.0	18.0	10.0	13.0	33/36	10.0	41.6	20	
85284532X4HI	EHIBM-XEU32CDS	85284532X4HISI	EHIBM-XEU32SDS		M32x1.5	16.0	21.0	12.0	16.0	36/36	10.0	45.3	20	
85280532X4HI	EHIBM-X7CDS	85280532X4HISI	EHIBM-X7SDS		M32x1.5	20.0	25.0	14.0	20.0	42/42	15.0	46.7	20	
85284540X4HI	EHIBM-XEU40CDS	85284540X4HISI	EHIBM-XEU40SDS		M40x1.5	21.0	28.0	17.0	21.0	46/46	10.0	50.4	10	
85280540X4HI	EHIBM-X8CDS	85280540X4HISI	EHIBM-X8SDS		M40x1.5	25.0	32.0	21.0	25.0	53/53	18.0	55.9	10	
85280550X4HI	EHIBM-X9CDS	85280550X4HISI	EHIBM-X9SDS		M50x1.5	31.0	38.0	22.0	31.0	60/60	18.0	58.1	10	
85280563X4HI	EHIBM-X10CDS	85280563X4HISI	EHIBM-X10SDS		M63x1.5	35.0	44.0	28.0	35.0	65/65	18.0	58.4	10	
Ex i														
84280512X4HI	EHIBMI-0XSCDS	84280512X4HISI	EHIBMI-0XSSDS		bimed	M12x1.5	4.0	6.5	3.0	4.0	15/15	10.0	28.3	100
84280516X4HI	EHIBMI-SX1CDS	84280516X4HISI	EHIBMI-SX1SDS			M16x1.5	5.0	8.0	4.0	5.0	19/19	10.0	31.6	50
84280517X4HI	EHIBMI-X1CDS	84280517X4HISI	EHIBMI-X1SDS	M16x1.5		6.0	10.0	4.0	6.0	22/22	10.0	35.2	50	
84280517M20X4HI	EHIBMI-SX2CDS	84280517M20X4HISI	EHIBMI-SX2SDS	M20x1.5		6.0	10.0	4.0	6.0	22/24	10.0	35.2	50	
84280520X4HI	EHIBMI-X2CDS	84280520X4HISI	EHIBMI-X2SDS	M20x1.5		7.5	12.0	6.0	7.5	24/24	10.0	35.8	50	
84284520X4HI	EHIBMI-MX2CDS	84284520X4HISI	EHIBMI-MX2SDS	M20x1.5		7.0	13.0	4.0	7.0	25/25	10.0	36.4	50	
84280522X4HI	EHIBMI-X3CDS	84280522X4HISI	EHIBMI-X3SDS	M20x1.5		11.0	14.0	8.0	11.0	27/27	10.0	35.0	50	
84280522M25X4HI	EHIBMI-SX5CDS	84280522M25X4HISI	EHIBMI-SX5SDS	M25x1.5		11.0	14.0	8.0	11.0	27/27	10.0	35.8	25	
84284525X4HI	EHIBMI-XEU25CDS	84284525X4HISI	EHIBMI-XEU25SDS	M25x1.5		13.0	17.0	9.0	13.0	29/29	10.0	40.2	25	
84280525X4HI	EHIBMI-X5CDS	84280525X4HISI	EHIBMI-X5SDS	M25x1.5		13.0	18.0	10.0	13.0	33/33	10.0	41.6	25	
84280525M32X4HI	EHIBMI-SX7CDS	84280525M32X4HISI	EHIBMI-SX7SDS	M32x1.5		13.0	18.0	10.0	13.0	33/36	10.0	41.6	20	
84284532X4HI	EHIBMI-XEU32CDS	84284532X4HISI	EHIBMI-XEU32SDS	M32x1.5		16.0	21.0	12.0	16.0	36/36	10.0	45.3	20	
84280532X4HI	EHIBMI-X7CDS	84280532X4HISI	EHIBMI-X7SDS	M32x1.5		20.0	25.0	14.0	20.0	42/42	15.0	46.7	20	
84284540X4HI	EHIBMI-XEU40CDS	84284540X4HISI	EHIBMI-XEU40SDS	M40x1.5		21.0	28.0	17.0	21.0	46/46	10.0	50.4	10	
84280540X4HI	EHIBMI-X8CDS	84280540X4HISI	EHIBMI-X8SDS	M40x1.5		25.0	32.0	21.0	25.0	53/53	18.0	55.9	10	
84280550X4HI	EHIBMI-X9CDS	84280550X4HISI	EHIBMI-X9SDS	M50x1.5		31.0	38.0	22.0	31.0	60/60	18.0	58.1	10	
84280563X4HI	EHIBMI-X10CDS	84280563X4HISI	EHIBMI-X10SDS	M63x1.5		35.0	44.0	28.0	35.0	65/65	18.0	58.4	10	

